

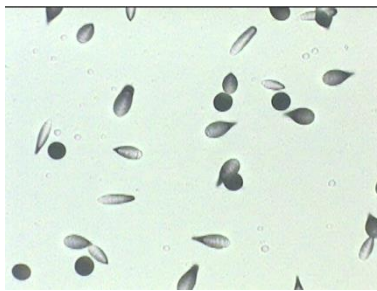
Preface

Radon in the built and natural environment is the major source of exposure of the public to background ionizing radiation and it is responsible about 10% of lung cancer fatalities. Monitoring environmental radon aims at preventing humans health and lives. Radon monitoring is also used to trace subsurface flow phenomena.

Etched track radon detectors



Etched α -tracks in CR-39



Infrastructure

Radon potential of building sites



The Radamon type etched track radon detectors can be used to measure radon and thoron concentration in indoor and outdoor air, and also in soil gas. It is also used to measure dissolved radon and radium content of water samples.

Examples

Representative indoor radon survey in homes and workplaces including mines, caves, spas, mofettes.

